

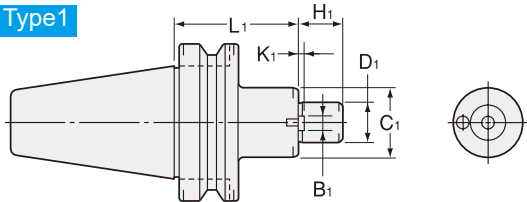


SM1

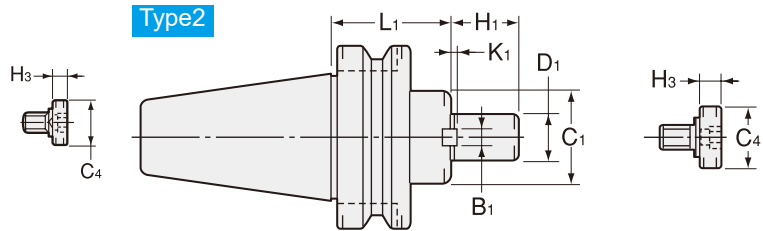
シェルエンドミルアーバ Shell End Mill Arbor

JIS B4214-1975シェルエンドミル用。
For JIS B4214-1975 Shell end mill.

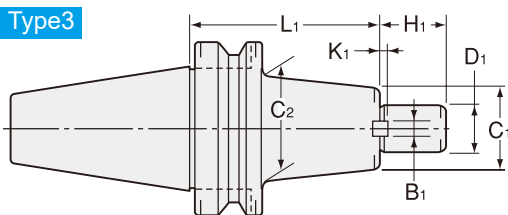
Type1



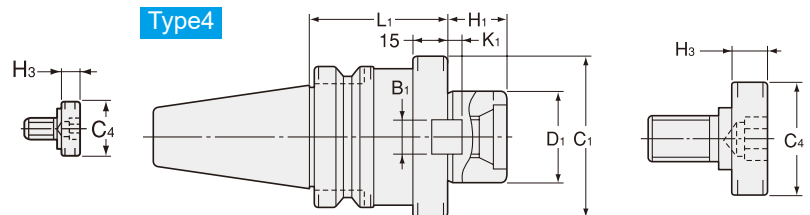
Type2



Type3



Type4



| 商品コード Code | 型式 Model | Type | D1 (h6) | L1 | C1 | C2 | H1 | B1 | K1 | C4 | H3 | kg | - | 締付ボルト Clamp Bolt | 参考カッター径 Cutter dia. Example |
|---------------|-------------------------|------|------------|-----|----|----|----|----|-----|----|----|-----|--------|---------------------|-----------------------------------|
| 0780 00116030 | BT30 -SM1-16 -30 | 1 | 16 | 30 | 34 | - | 15 | 8 | 5 | 20 | 7 | 0.5 | 16,320 | MBA-M8 | 40 |
| 0780 00122030 | -SM1-22 -30 | 1 | 22 | 30 | 42 | - | 17 | 10 | 5.6 | 28 | 9 | 0.6 | 16,320 | MBA-M10 | 50 |
| 0780 00316060 | BT40 -SM1-16 -60 | 1 | 16 | 60 | 34 | - | 15 | 8 | 5 | 20 | 7 | 1.3 | 19,000 | MBA-M8 | 40 |
| 0780 00316120 | -SM1-16 -120 | 1 | 16 | 120 | 34 | - | 15 | 8 | 5 | 20 | 7 | 1.7 | 20,190 | MBA-M8 | 40 |
| 0780 00322060 | -SM1-22 -60 | 1 | 22 | 60 | 42 | - | 17 | 10 | 5.6 | 28 | 9 | 1.5 | 19,000 | MBA-M10 | 50 |
| 0780 00322120 | -SM1-22 -120 | 1 | 22 | 120 | 42 | - | 17 | 10 | 5.6 | 28 | 9 | 2.1 | 20,190 | MBA-M10 | 50 |
| 0780 00327045 | -SM1-27 -45 | 2 | 27 | 45 | 48 | - | 19 | 12 | 6.3 | 33 | 10 | 1.4 | 19,000 | MBA-M12 | 63 80 |
| 0780 00327105 | -SM1-27 -105 | 2 | 27 | 105 | 48 | - | 19 | 12 | 6.3 | 33 | 10 | 2.3 | 20,190 | MBA-M12 | 63 80 |
| 0780 00332045 | -SM1-32 -45 | 2 | 32 | 45 | 58 | - | 24 | 14 | 7 | 40 | 10 | 1.6 | 19,000 | MBA-M16 | 100 |
| 0780 00332075 | -SM1-32 -75 | 2 | 32 | 75 | 58 | - | 24 | 14 | 7 | 40 | 10 | 2.3 | 20,190 | MBA-M16 | 100 |
| 0780 00340060 | -SM1-40 -60 | 4 | 40 | 60 | 70 | - | 27 | 16 | 8 | 50 | 14 | 2.3 | 20,190 | MBA-M20 | 125 |
| 0780 00516075 | BT50 -SM1-16 -75 | 1 | 16 | 75 | 34 | - | 15 | 8 | 5 | 20 | 7 | 4.0 | 26,080 | MBA-M8 | 40 |
| 0780 00516120 | -SM1-16 -120 | 1 | 16 | 120 | 34 | - | 15 | 8 | 5 | 20 | 7 | 6.3 | 28,560 | MBA-M8 | 40 |
| 0780 00522075 | -SM1-22 -75 | 1 | 22 | 75 | 42 | - | 17 | 10 | 5.6 | 28 | 9 | 4.3 | 26,080 | MBA-M10 | 50 |
| 0780 00522120 | -SM1-22 -120 | 1 | 22 | 120 | 42 | - | 17 | 10 | 5.6 | 28 | 9 | 4.7 | 28,560 | MBA-M10 | 50 |
| 0780 00522180 | -SM1-22 -180 | 1 | 22 | 180 | 42 | - | 17 | 10 | 5.6 | 28 | 9 | 5.3 | 29,800 | MBA-M10 | 50 |
| 0780 00527060 | -SM1-27 -60 | 2 | 27 | 60 | 48 | - | 19 | 12 | 6.3 | 33 | 10 | 4.2 | 26,080 | MBA-M12 | 63 80 |
| 0780 00527105 | -SM1-27 -105 | 3 | 27 | 105 | 48 | 60 | 19 | 12 | 6.3 | 33 | 10 | 5.0 | 27,320 | MBA-M12 | 63 80 |
| 0780 00527150 | -SM1-27 -150 | 3 | 27 | 150 | 48 | 60 | 19 | 12 | 6.3 | 33 | 10 | 5.9 | 28,560 | MBA-M12 | 63 80 |
| 0780 00532045 | -SM1-32 -45 | 2 | 32 | 45 | 58 | - | 24 | 14 | 7 | 40 | 10 | 4.2 | 26,080 | MBA-M16 | 100 |
| 0780 00532075 | -SM1-32 -75 | 3 | 32 | 75 | 58 | 70 | 24 | 14 | 7 | 40 | 10 | 4.8 | 27,320 | MBA-M16 | 100 |
| 0780 00532105 | -SM1-32 -105 | 3 | 32 | 105 | 58 | 70 | 24 | 14 | 7 | 40 | 10 | 5.6 | 28,560 | MBA-M16 | 100 |
| 0780 00540075 | -SM1-40 -75 | 3 | 40 | 75 | 70 | 80 | 27 | 16 | 8 | 50 | 14 | 5.5 | 26,080 | MBA-M20 | 125 |
| 0780 00540105 | -SM1-40 -105 | 3 | 40 | 105 | 70 | 80 | 27 | 16 | 8 | 50 | 14 | 6.4 | 27,320 | MBA-M20 | 125 |

締付ボルトは付属しています。
Clamp bolt is Included.

ご注文例 Ordering Example

BT30 - SM1-16 - 30

シャンクサイズ インロー径 突き出し長さ (L1)
Shank size D1 Projection length

BT
AHO-A
HSK-A/E/F/C
HSK-T
C
UTS
ST
専用機
関連機器
プシュ・メントリ
ミリングチャック
コレットホルダ
Zeroホルダ
Hydraulic Chuck
タッピングチャック
アール類
Multibore tool system
機能付ホルダ
TURNING TOOL FOR SPEEDIO
フルシステム
Tool Shank Dimensions