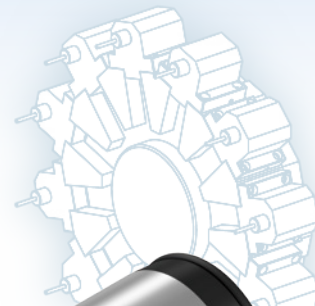




Quick Change Adapter for CNC Lathe ST•M-KH•E

NEW



A cost-effective system for quickly changing tools on a CNC lathe!

Features

- 1 **Reduces machine downtime** for tool changes (also supports off-machine presets)
- 2 Uses the KH-E quick change stub holder, which has a proven track record with many automobile manufacturers, **to achieve inexpensive quick changes.**
- 3 Uses a hydraulic expansion system rather than a side lock system to attach the adapter to the tool post, **achieving high-precision machining (eliminates misalignment)**

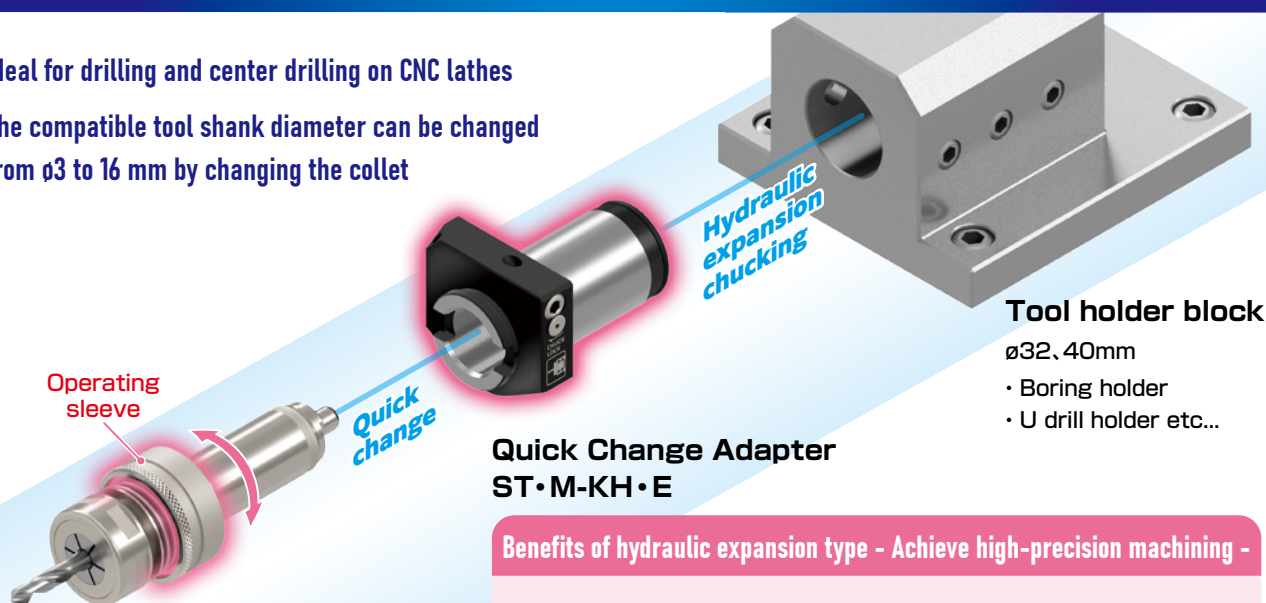
Video



Combination diagram

Functions

- Ideal for drilling and center drilling on CNC lathes
- The compatible tool shank diameter can be changed from $\phi 3$ to 16 mm by changing the collet



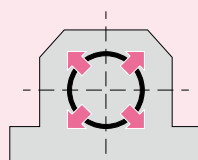
Quick Change Stub Holder KHB-ECL

Holders can be replaced with one touch!

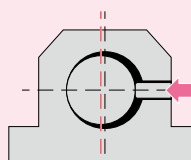
- | | |
|--------------|--|
| Removal | Simply pull the operating sleeve and rotate the holder 90°! |
| Installation | Simply insert the holder into the adapter and rotate it 90°! |

Benefits of hydraulic expansion type - Achieve high-precision machining -

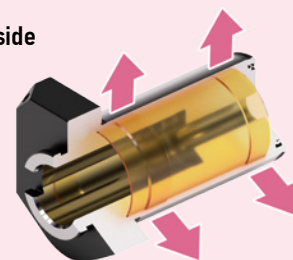
Fixing the tool post with hydraulic expansion type instead of conventional side lock type eliminates misalignment!



Hydraulic expansion type
No misalignment!



Conventional side lock
Misalignment



Oil Chamber

NT TOOL CORPORATION

HEAD OFFICE : www.nttool.com (Web in English available)

NT USA CORPORATION : www.nttoolusa.com

EUROPE OFFICE : www.nttooleurope.com

TECHNO MAIL technomail@nttool.co.jp

For technical question, please contact us by technomail.

CV202505

Time-saving effect of quick change adapter...

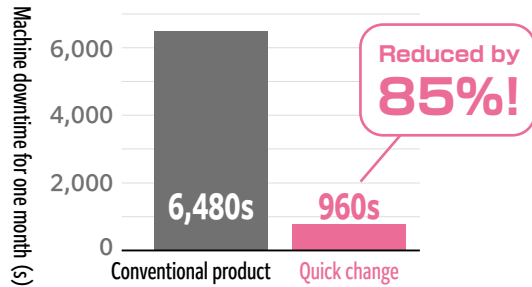
Reduces setup time by 85%!

Example of reduced setup time ①

Workpiece: Parts

Tools used: 2 drills, 1 center drill

Number of setups: 2 times/day

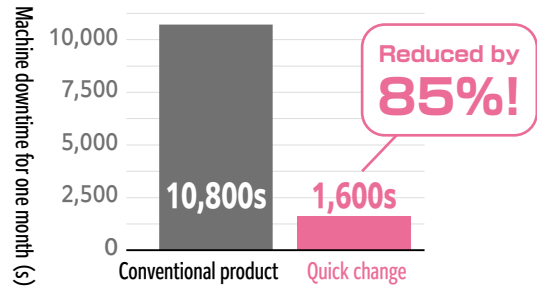


Example of reduced setup time ②

Workpiece: Parts

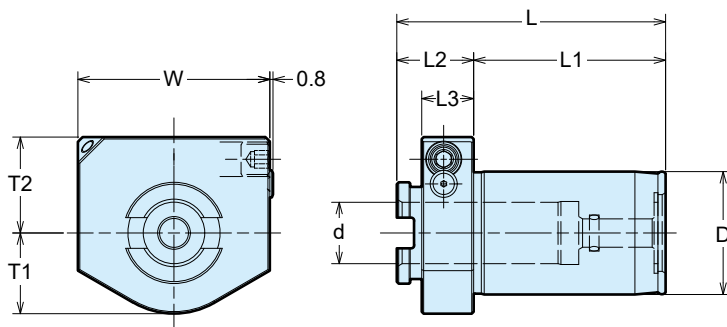
Tools used: 1 center drill

Number of setups: 10 times (tool change once)/day



Dimension

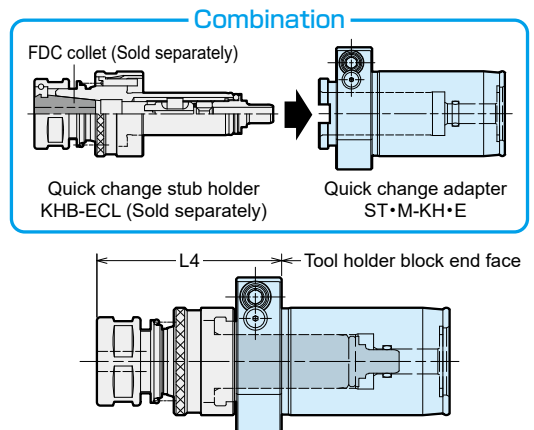
NEW Quick Change Adapter for CNC Lathe ST•M-KH•E



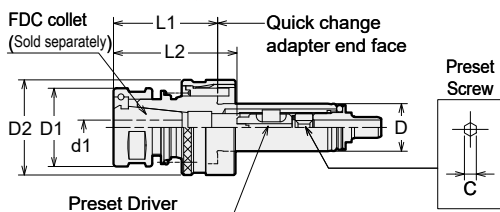
- ST-M-KH-E is for CNC lathes only.
- Use a tool post with an inner diameter within the H7 tolerance range.

Code	Model	D	d	L	L1	L2	L3	W	T1	T2	Wrench (Sold separately)	Model of KHB-ECL	L4	Maximum coolant pressure
0480 10321600	ST32M-KH16E	32	16	70	50	20	13.5	50	21	25	L-4T	KHB-16ECL	55	2MPa
0480 10322200	ST32M-KH22E	32	22	70	50	20	13.5	50	21	25		KHB-22ECL	55	
0480 10401600	ST40M-KH16E	40	16	75	53	22	15.5	55	24.5	27.5	L-5T	KHB-16ECL	57	
0480 10402200	ST40M-KH22E	40	22	75	53	22	15.5	55	24.5	27.5		KHB-22ECL	57	
0480 10402500	ST40M-KH25E	40	25	75	53	22	15.5	55	24.5	27.5		KHB-25ECL	57	

Dimensions when combined with holders



NEW Quick Change Stub Holder for CNC Lathe KHB-ECL (Sold separately)



- KHB-ECL is for quick change adapters only.
- Collets and spanners must be ordered separately.
- Use FDC-OH (for tools with coolant holes) or FDC-C (for collet through) for center through coolant supply.
- Check the QR code for a list of collet sizes. You can download them from the "Dimensions table" tab at the link.

Code	Model	D	D1	D2	L1	C	Adjustment amount L2	Nut	Sold separately		
									Collet	d1	Spanner
3058 6000000	KHB-16ECL	16	26	32	35	4	29 ~ 41	HDP-09	FDC-09	3.0 ~ 9.0	S-1L
3058 2000000	KHB-22ECL	22	32	38	35	5	35 ~ 57	HDP-12	FDC-12	3.0 ~ 12.0	S-3L
3058 5000000	KHB-25ECL	25	36	44	35	6	36 ~ 55	HDP-16	FDC-16	6.0 ~ 16.0	S-4L

