



High-pressure cleaning tool for machining center PAT.P

for BT30

Boost *Master* BMA

Add a workpiece cleaning function to your BT30 small machining center!

CHANGING THE STANDARD IN THE MACHINING PROCESS.

Increased pressure and spray of coolant.
ATC compatible high pressure cleaning tool.

New Standardized 90° Nozzle!

**Sold Separately / Adjustable Discharge Direction!*

**MAX
15MPa**
(Continuous operation)



**See Boost Master
in action!**

Increased pressure and spray of coolant. ATC compatible high pressure cleaning tool.

Remove chips with precision aim.

Remove chips in 0.5 sec (Dia.7, depth 100 mm).

Consolidate operations and improve work.

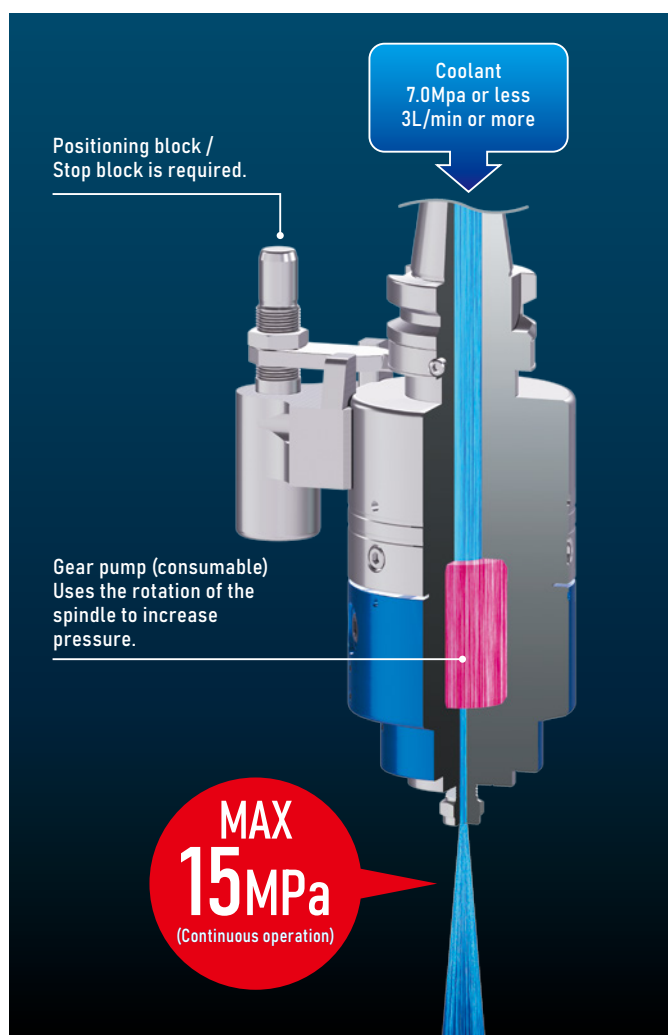
No need for high pressure washing machines, Machines are not left idle.

Implement energy and space saving.

There is no requirement for an extra high-pressure pump or cooling device.



Mechanisms



Specifications

Recommended Application Environment

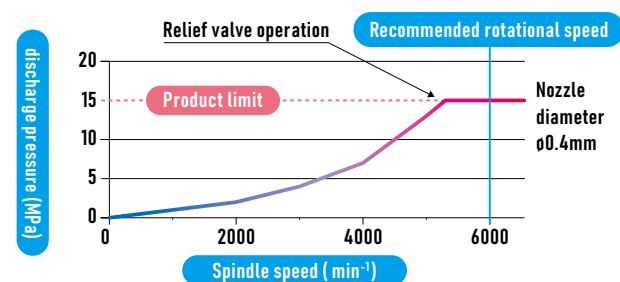
| Input (M/C output) | Recommended Rotation Speed *1 | 6,000min ⁻¹ |
|-----------------------|-------------------------------|------------------------------|
| | Coolant filtration filter | 10μm or less is recommended. |

- Oil skimmer or other oil removal equipment is recommended.
- Do not use on materials that generate fine dust when cutting. (Quartz glass, ceramic, magnesium, carbon, graphite, etc.) Using in an environment where fine dust is generated may significantly reduce the product's lifespan.

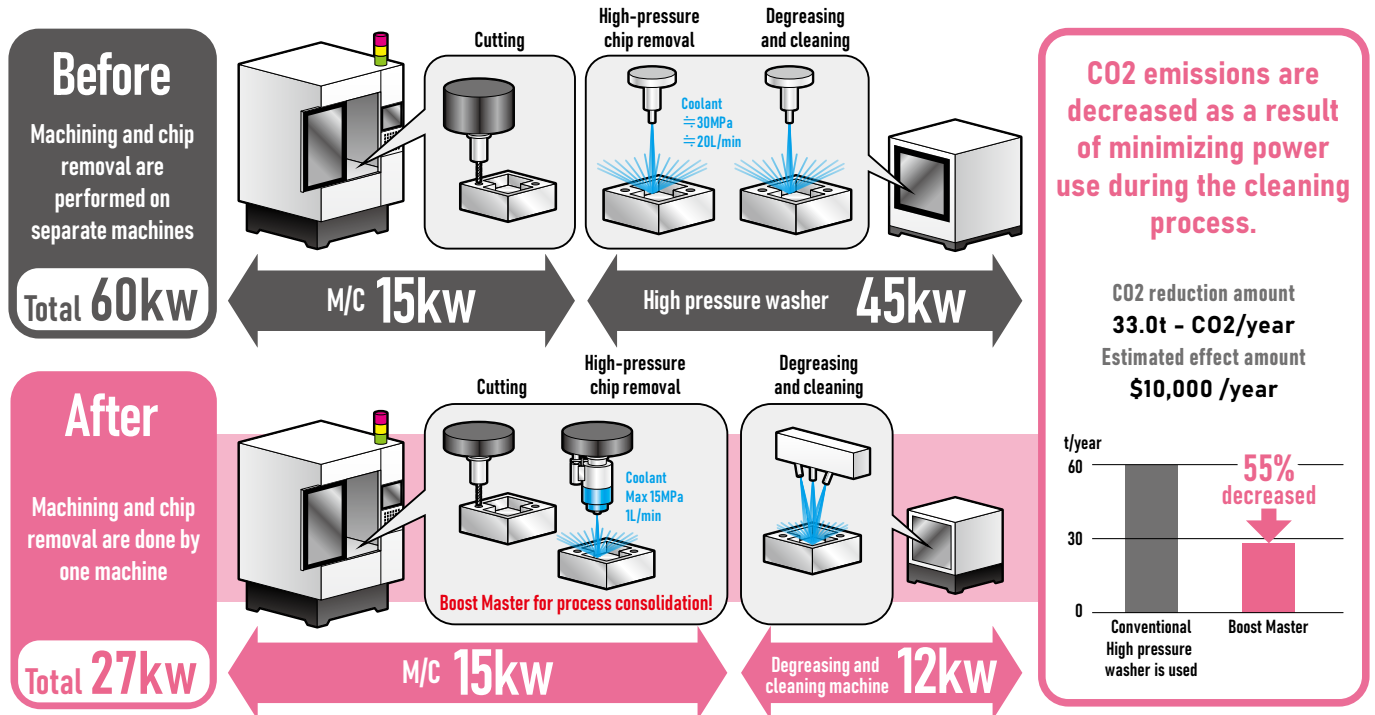
Specifications (standard specifications)

| | | |
|-----------------------|---------------------------------|---|
| Input (M/C output) | Coolant input pressure | 7.0MPa or less |
| | Coolant inflow rate | 3L/min or more |
| | Coolant temperature | 40°C or less |
| Output | Max. coolant discharge pressure | 15MPa |
| | Discharge flow rate (at 15MPa) | 1.23L/min |
| | Standard nozzle hole diameter | 0.4 mm |
| Other | Coolant used | Water-soluble only (Dilution density 10 % or less) |

Spindle speed and discharge pressure

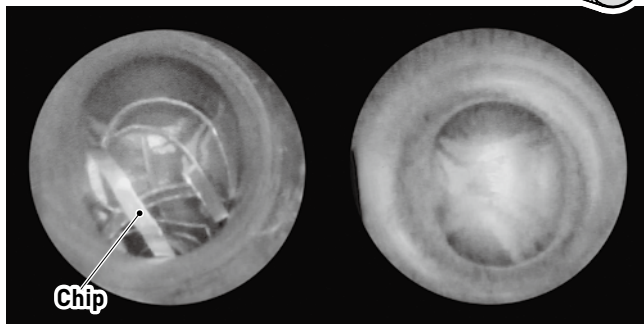
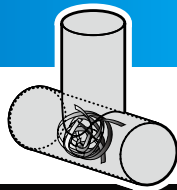


Example 1



Example 2

Remove chips from cross-drilled holes with M/C integration.
No longer a manual operation.

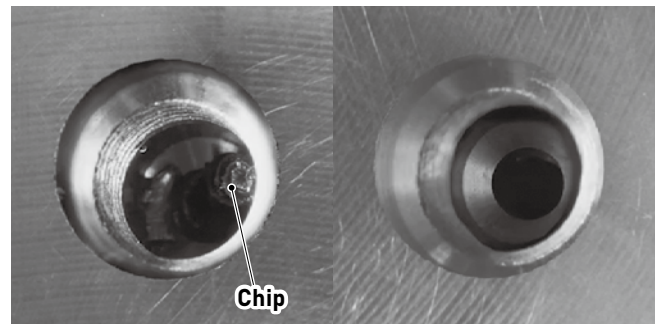


Before

After

Example 3

Remove chips from bottom tap holes with M/C integration. No longer a manual operation.

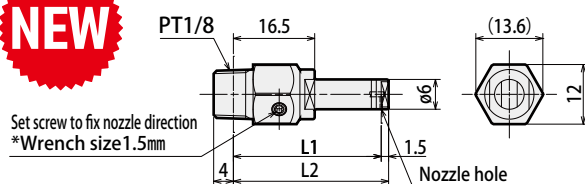


Before

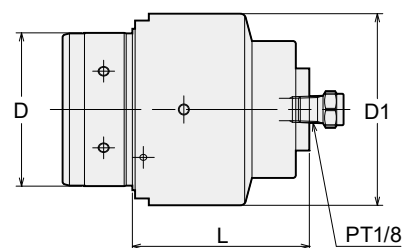
After

90° nozzle

NEW



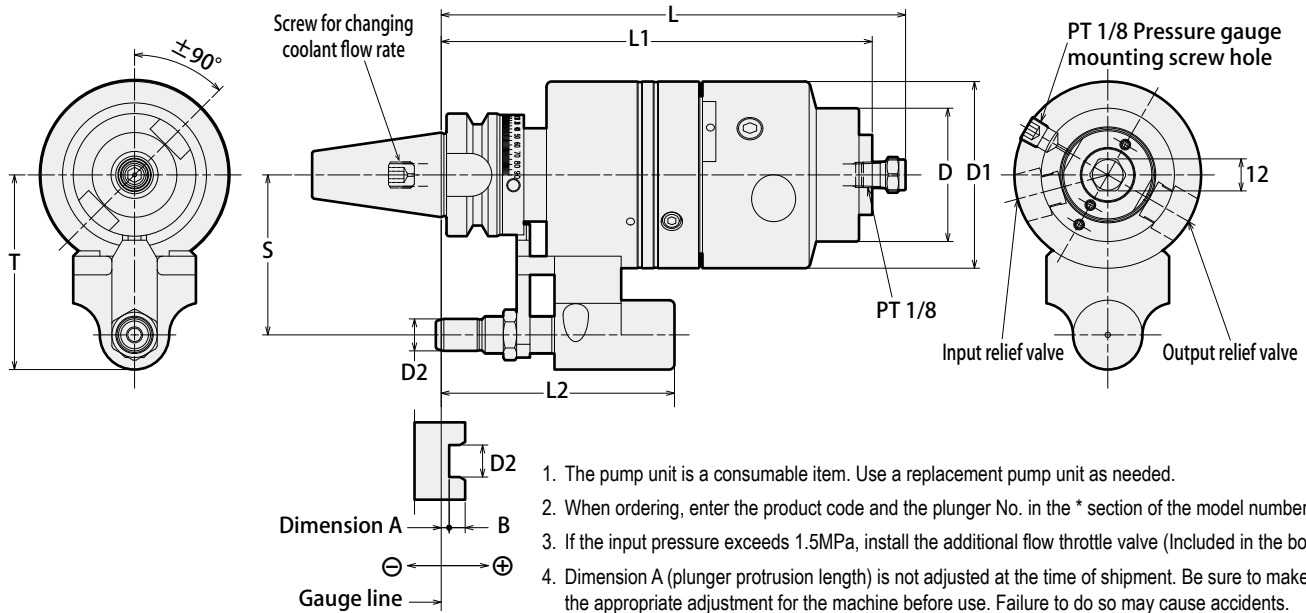
Replacement pump unit



| Code | Model | L | L1 | L2 | Nozzle I.D. | Spanner |
|---------------|--------------------|-------|----|------|-------------|---------|
| 2974 00102301 | BMA-NOZZLE-L30-A90 | (193) | 30 | 31.5 | ø0.5 | 12 |
| 2974 00102801 | BMA-NOZZLE-L80-A90 | (243) | 80 | 81.5 | ø0.5 | 12 |

| Code | Model | D | D1 | L | Nozzle diameter |
|---------------|----------|----|----|------|-----------------|
| 2974 00101001 | BMA-GP-1 | 56 | 70 | 64.5 | 0.4 |

The pump unit is a consumable item. Use a replacement pump unit as needed.



| BT Shank | | WBT Shank | | D | D1 | D2 | L | L1 | L2 | S | T | B | Standard nozzle diameter | kg |
|----------------|-----------------|----------------|------------------|----|----|----|-------|-----|----|----|----|---|--------------------------|-----|
| Code | Model | Code | Model | | | | | | | | | | | |
| 2970 0011162 ※ | BT30-BMA-162- ※ | 3380 0011162 ※ | WBT30-BMA-162- ※ | 50 | 70 | 12 | (174) | 162 | 88 | 60 | 73 | 9 | 0.4 | 2.5 |

Plunger selection table based on dimension A

| Shank | Plunger No. | |
|-------------|-------------|------------|
| | 1 | 2 |
| BT30, WBT30 | +9 ~ -0.9 | -1 ~ -10.9 |

Order Example

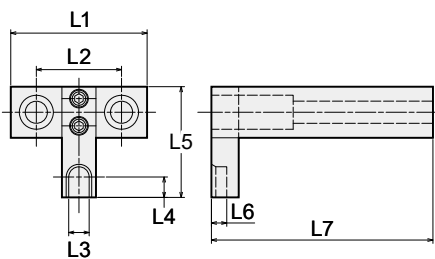
BT30 -BMA-162- 1

Shank size

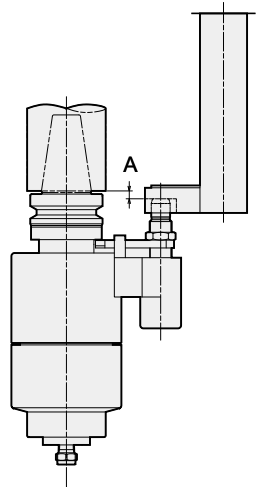
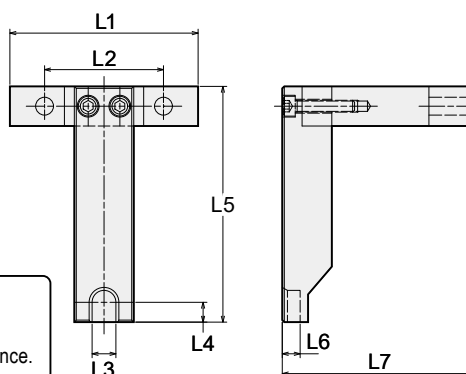
Plunger No.

Positioning Block

Type1



Type2



Depending on the machine specifications, the positioning block may not be able to be installed. Please check with the machine manufacturer in advance.

| Code | Model | Supported M/C | | Type | L1 | L2 | L3 ^{+0.03} / _{-0.01} | L4 | L5 | L6 | L7 | A | Mounting Bolts |
|---------------|----------------------|---------------|--|------|-----|----|--|----|-----|----|-------|---|----------------|
| | | Manufacturer | Model | | | | | | | | | | |
| 3170 01010312 | IGB-BMA-FANUC-12-1 | FANUC | ROBODRILL | 1 | 80 | 50 | 12 | 14 | 65 | 9 | 130 | 3 | M12X100 |
| 3170 02010312 | IGB-BMA-BROTHER-12-1 | Brother | S300Xd1 S500Xd1 S700Xd1 U500Xd1 SX1 SX2 W1000Xd1 | 2 | 95 | 60 | 12 | 11 | 120 | 9 | 96 | 9 | M8X35 |
| 3170 02020312 | IGB-BMA-BROTHER-12-2 | Brother | RX1 R450Xd1 R650Xd1 | 2 | 105 | 75 | 12 | 11 | 129 | 9 | 116 | 9 | M10X35 |
| 3170 02030312 | IGB-BMA-BROTHER-12-3 | Brother | F600X1 | 2 | 80 | 30 | 12 | 11 | 142 | 9 | 167.5 | 9 | M6X30 |

NT TOOL CORPORATION

2025.01.

TECHNO MAIL technomail@nttool.co.jp For techical question, please contact us by technomail.

NT TOOL CORPORATION (HEAD OFFICE) : en.nttool.com
NT USA CORPORATION (OFFICE) : www.nttoolusa.com

NT TOOL EUROPE GmbH (OFFICE) : www.nttooleurope.com
NT TOOL THAI CO., LTD. (OFFICE) : nttoolthai.com

NT TOOL DE MEXICO S.A. DE C.V. (OFFICE) : www.nttool.com.mx