



*High-pressure cleaning tool for machining center PAT.P*

# **Boost *M*aster BMA**

## **CHANGING THE STANDARD IN THE MACHINING PROCESS.**

Increased pressure and spray of coolant.  
ATC compatible high pressure cleaning tool.

**New Standardized 90° Nozzle!**

*\*Sold Separately / Adjustable Discharge Direction!*

**MAX  
15MPa**  
(Continuous operation)



**See Boost Master  
in action!**

Increased pressure and spray of coolant. ATC compatible high pressure cleaning tool.

## Remove chips with precision aim.

Remove chips in 0.5 sec (Dia.7, depth 100 mm).

## Consolidate operations and improve work.

No need for high pressure washing machines, Machines are not left idle.

## Implement energy and space saving.

There is no requirement for an extra high-pressure pump or cooling device.



## Mechanisms

Positioning block /  
Stop block is required.

Coolant  
7.0MPa or less  
3L/min or more

Gear pump (consumable)  
Uses the rotation of the  
spindle to increase  
pressure.

MAX  
**15MPa**  
(Continuous operation)

## Specifications

### Recommended Application Environment

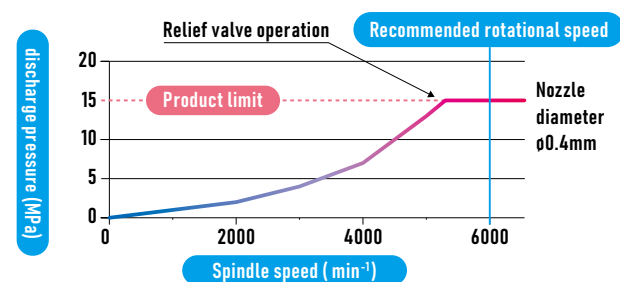
Input (M/C output)	Recommended Rotation Speed *1	6,000min <sup>-1</sup>
	Coolant filtration filter	10μm or less is recommended.

- Oil skimmer or other oil removal equipment is recommended.
- Do not use on materials that generate fine dust when cutting. (Quartz glass, ceramic, magnesium, carbon, graphite, etc.) Using in an environment where fine dust is generated may significantly reduce the product's lifespan.

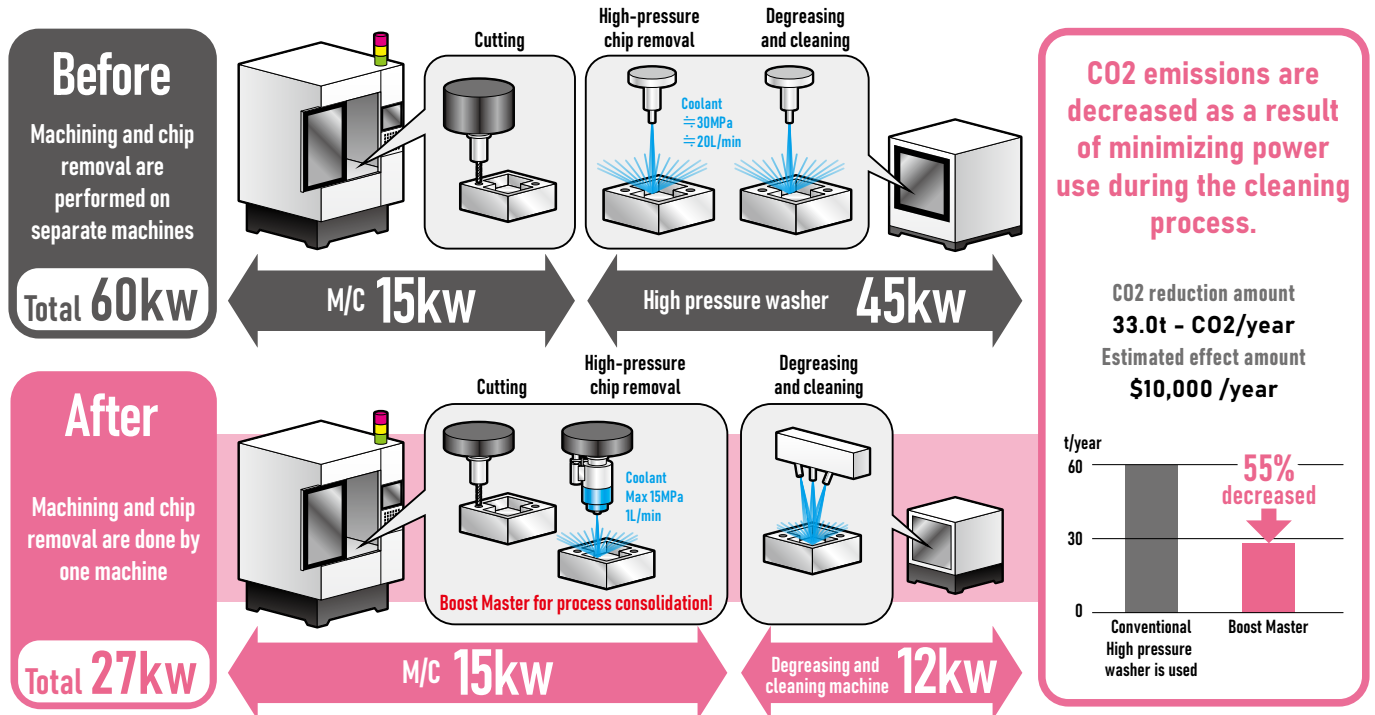
### Specifications (standard specifications)

Input (M/C output)	Coolant input pressure	7.0MPa or less
	Coolant inflow rate	3L/min or more
	Coolant temperature	40°C or less
Output	Max. coolant discharge pressure	15MPa
	Discharge flow rate (at 15MPa)	1.23L/min
	Standard nozzle hole diameter	0.4 mm
Other	Coolant used	Water-soluble only (Dilution density 10 % or less)

### Spindle speed and discharge pressure

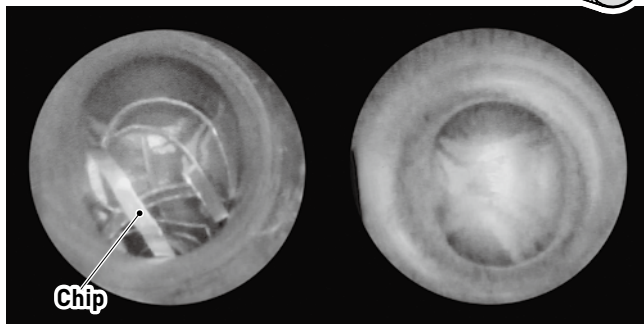
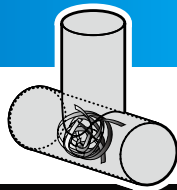


## Example 1



## Example 2

Remove chips from cross-drilled holes with M/C integration.  
No longer a manual operation.

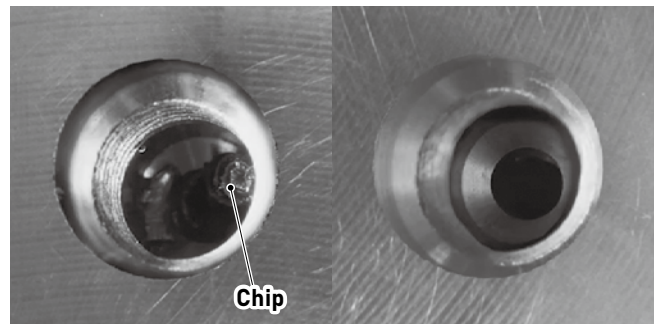
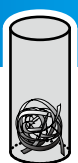


Before

After

## Example 3

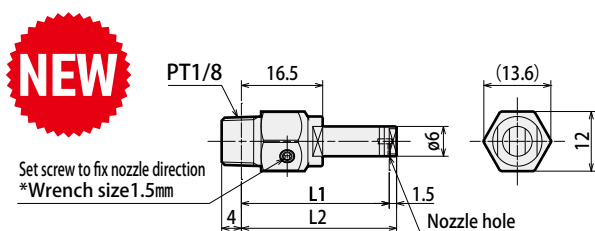
Remove chips from bottom tap holes with M/C integration. No longer a manual operation.



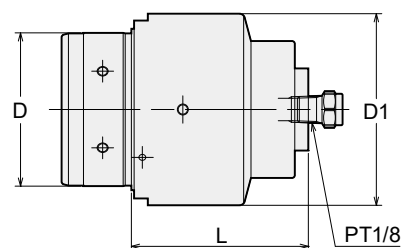
Before

After

## 90° nozzle



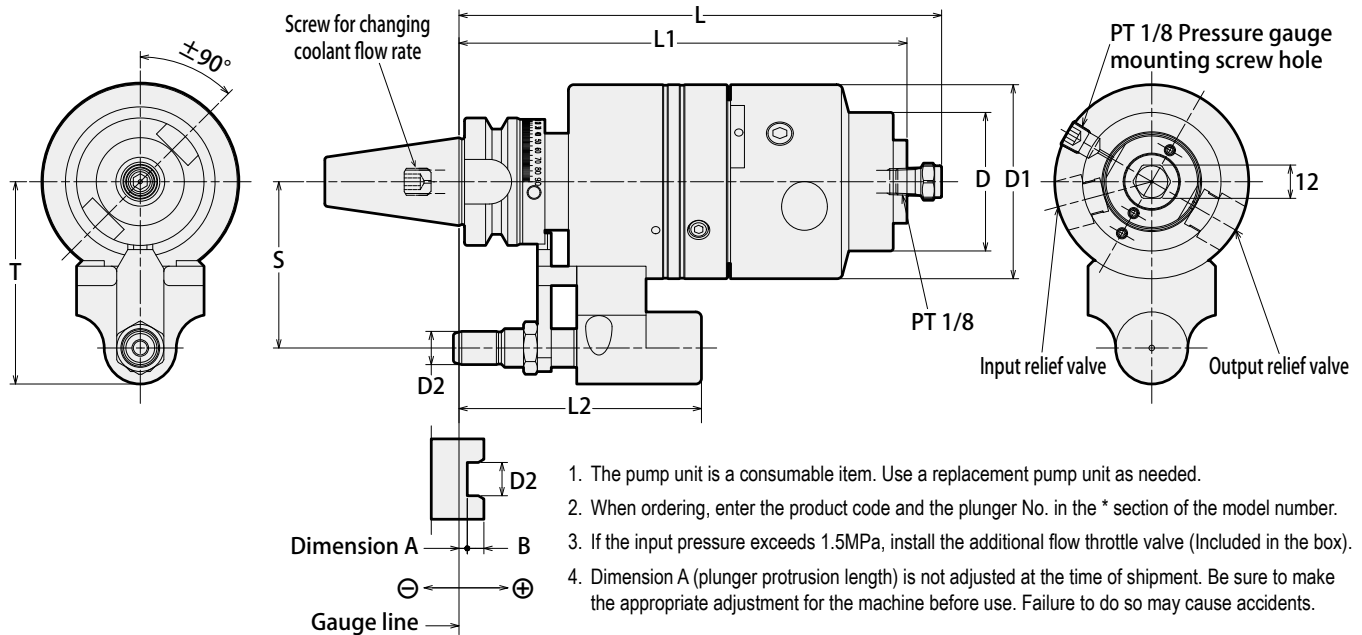
## Replacement pump unit



Code	Model	L	L1	L2	Nozzle I.D.	Spanner
2974 00102301	BMA-NOZZLE-L30-A90	(193)	30	31.5	ø0.5	12
2974 00102801	BMA-NOZZLE-L80-A90	(243)	80	81.5	ø0.5	12

Code	Model	D	D1	L	Nozzle diameter
2974 00101001	BMA-GP-1	56	70	64.5	0.4

The pump unit is a consumable item. Use a replacement pump unit as needed.



BT Shank		WBT Shank		D	D1	D2	L	L1	L2	S	T	B	Standard nozzle diameter	kg
Code	Model	Code	Model											
2970 001162 *	BT30-BMA-162- *	3380 001162 *	WBT30-BMA-162- *	50	70	12	(174)	162	88	60	73	9	0.4	2.5
2970 001368 *	BT40-BMA-168- *	3380 001368 *	WBT40-BMA-168- *	50	70	18	(179)	168	106	65	81	9	0.4	3.1
2970 0015177 *	BT50-BMA-177- *	3380 0015177 *	WBT50-BMA-177- *	50	70	18	(188)	177	115	80	96	9	0.4	5.5

Plunger selection table based on dimension A					
Shank	Plunger No.				
	1	2	3	4	5
BT30, WBT30	+9 ~ -0.9	-1 ~ -10.9	—	—	—
BT40, WBT40	+20 ~ +10.1	+10 ~ +0.1	0 ~ -9.9	-10 ~ -19.9	-20 ~ -29.9
BT50, WBT50	+28 ~ +18.1	+18 ~ +8.1	+8 ~ -1.9	-2 ~ -11.9	-12 ~ -21.9

Order Example

**BT30 - BMA-162 - 1**

Shank size                      Plunger No.

HSK • A Shank		D	D1	D2	L	L1	L2	S	T	B	Standard nozzle diameter	kg
Code	Model											
5940 1410165 *	HSK 50A - BMA - 165 - *	50	70	12	(177)	165	91	50	63	9	0.4	2.5
5940 7510166 *	HSK 63A - BMA - 166 - *	50	70	18	(178)	166	105	65	81	9	0.4	2.7
5940 7710167 *	HSK100A - BMA - 167 - *	50	70	18	(178)	167	105	80	96	9	0.4	4.1

• HSK63A, HSK100A have manual clamp holes in the shank.

Plunger selection table based on dimension A					
Shank	Plunger No.				
	1	2	3	4	5
HSK50A	+12 ~ +2.1	+2 ~ -7.9	—	—	—
HSK63A	+19 ~ +9.1	+9 ~ -0.9	-1 ~ -10.9	-11 ~ -20.9	-21 ~ -30.9
HSK100A	+22 ~ +12.1	+12 ~ +2.1	+2 ~ -7.9	-8 ~ -17.9	-18 ~ -27.9

Order Example

**HSK50A - BMA-165 - 1**

Shank size                      Plunger No.

UTS Shank		D	D1	D2	L	L1	L2	S	T	B	Standard nozzle diameter	kg
Code	Model											
1470 2010174 *	UTS6350-BMA-174- *	50	70	18	(185)	174	112	65	81	9	0.4	3.2
1470 2110174 *	UTS6350-BMA-174-H- *											

Plunger selection table based on dimension A					
Shank	Plunger No.				
	1	2	3	4	5
UTS 6350					
Low pressure type	+26 ~ +16.1	+16 ~ +6.1	+6 ~ -3.9	-4 ~ -13.9	-14 ~ -23.9
UTS 6350					
High pressure type					

The maximum coolant pressure of the UTS shank is 0 to 1.0 MPa for low pressure and 1.1 to 7.0 MPa for high pressure.

Order Example

Low pressure type : **UTS6350 - BMA-174 - 1**

High pressure type : **UTS6350 - BMA-174 -H - 1**

Shank size                      High pressure type                      Plunger No.

**NT TOOL CORPORATION**

HEAD OFFICE : [www.nttool.com](http://www.nttool.com) (Web in English available)

NT USA CORPORATION : [www.nttoolusa.com](http://www.nttoolusa.com) EUROPE OFFICE : [www.nttooleurope.com](http://www.nttooleurope.com)

TECHNO MAIL [technomail@nttool.co.jp](mailto:technomail@nttool.co.jp)

For technical question, please contact us by technomail.

2025.01.