



# Nut Series for Collet Holder

## Dust Seal Nut **HDP-DS**

**NEW!**

Do you want to simplify cleaning work when changing tools in a collet holder?

The dust seal prevents chips from entering the inside of the nut and collet, making it possible to change the cutting tool with a simple cleaning!



## RC Nut **HDP-R, GDP-R**

Improved performance and workability of collet holders by "just upgrading the nut"!

### Improved tightening operability

Improved operability, safety, and reliability of collet tightening.

### Improved stability at the maximum allowable rotation speed

Improved balancing performance to keep pace with higher processing speeds.



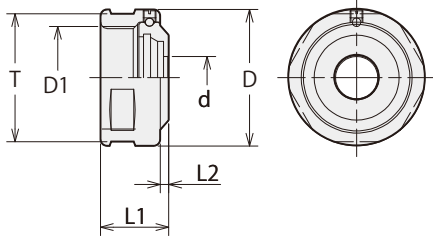
Roll Clutch Wrench



GDP-R nut

HDP-R nut

# HDP-DS Dust Seal Nut

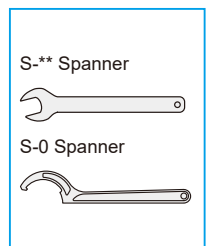


Model	Code	d	D	D1	L1	L2	T
HDP-07A-DS***	2544 00007***	ø3.0~ ø7.0	19	M14 P=0.75	13.5	2	—
HDP-09 -DS***	2544 00009***	ø3.0~ ø9.0	26	M19 P=1	15	2	24
HDP-12 -DS***	2544 00012***	ø3.0~ø12.0	32	M24 P=1	16	2	30
HDP-16 -DS***	2544 00016***	ø4.0~ø16.0	36	M28 P=1	16	2	33
HDP-22 -DS***	2544 00022***	ø4.0~ø22.0	46	M36 P=1	18	2	42

- The \*\*\* in the code and model number indicates the I.D.
- Example: Model: HDP-12-DS10.0 / Code: 2544 00012100
- The bore size is standardized to 0.5mm increments.

## HDP-DS & Combination of accessories

Nut		Collet		Spanner		
Model	Code	Model	Code	Model	Code	Standard Tightening Torque
HDP-07A-DS***	2544 00007***	FDC-07	2480 01 □ 0 ※※ 07	S-0	0803 00000000	10~15 N•m
HDP-09 -DS***	2544 00009***	FDC-09	2480 00 □ 0 ※※ 09	S-1L	0803 00000011	30~35 N•m
HDP-12 -DS***	2544 00012***	FDC-12	2480 00 □ ※※※ 12	S-3L	0803 00000013	35~40 N•m
HDP-16 -DS***	2544 00016***	FDC-16	2480 00 □ ※※※ 16	S-4L	0803 00000014	40~45 N•m
HDP-22 -DS***	2544 00022***	FDC-22	2480 00 □ ※※※ 22	S-5L	0803 00000015	55~60 N•m

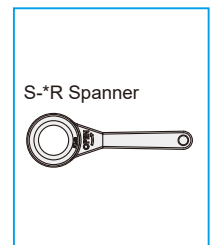


- 1 for AA class collets and 2 for A class collets are placed in the □ of the product code.
- ※ = Max. I.D. of collet.

# HDP-R, GDP-R RC Nut

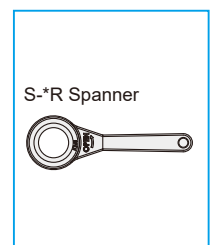
## HDP-R & Combination of accessories

Nut		Collet		Spanner		
Model	Code	Model	Code	Model	Code	Standard Tightening Torque
HDP-07R	2544 00000107	FDC-07	2480 01 □ 0 ※※ 07	S-0R	3155 00000000	10~15 N•m
HDP-09R	2544 00000109	FDC-09	2480 00 □ 0 ※※ 09	S-1R	3155 00000001	30~35 N•m
HDP-12R	2544 00000112	FDC-12	2480 00 □ ※※※ 12	S-3R	3155 00000003	35~40 N•m
HDP-16R	2544 00000116	FDC-16	2480 00 □ ※※※ 16	S-4R	3155 00000004	40~45 N•m
HDP-22R	2544 00000122	FDC-22	2480 00 □ ※※※ 22	S-5R	3155 00000005	55~60 N•m



## GDP-R & Combination of accessories

Nut		Collet		Spanner		
Model	Code	Model	Code	Model	Code	Standard Tightening Torque
HDP-07R	2544 00000107	FDC-07AA	2480 0110 ※※ 07	S-0R	3155 00000000	10~15 N•m
GDP-09R	2444 00000109	FDC-09AA	2480 0010 ※※ 09	S-1R	3155 00000001	30~35 N•m
GDP-12R	2444 00000112	FDC-12AA	2480 001 ※※※ 12	S-3R	3155 00000003	35~40 N•m
GDP-16R	2444 00000116	FDC-16AA	2480 001 ※※※ 16	S-4R	3155 00000004	40~45 N•m
GDP-22R	2444 00000122	FDC-22AA	2480 001 ※※※ 22	S-5R	3155 00000005	55~60 N•m



- 1 for AA class collets and 2 for A class collets are placed in the □ of the product code.
- ※ = Max. I.D. of collet.

**NT TOOL CORPORATION**

For technical question, please contact us by technomail.

TECHNOMAIL [technomail@nttool.co.jp](mailto:technomail@nttool.co.jp) WEB SITE [www.nttool.com](http://www.nttool.com)