



Falcon

SOTP type

Contactless Optical Tool Presetter **Aegis-i** Series

Simple and Compact!
High-performance presetter - affordable price!

Collet holder nut can be tightened on the machine.

Camera Handle
Simple one hand operation.

Fine Adjustment Dial for Z-axis / X-axis
Quick camera positioning by rotating the dial.

Mechanical Clamping
A pneumatic cylinder clamps the holder securely in place, guaranteeing excellent accuracy through repeated mounting of holders.

- **Contactless measurement does not damage cutting edges.**
Suitable for expensive cutting tools such as diamond and CBN.
- **Easy operation reduces human error.**

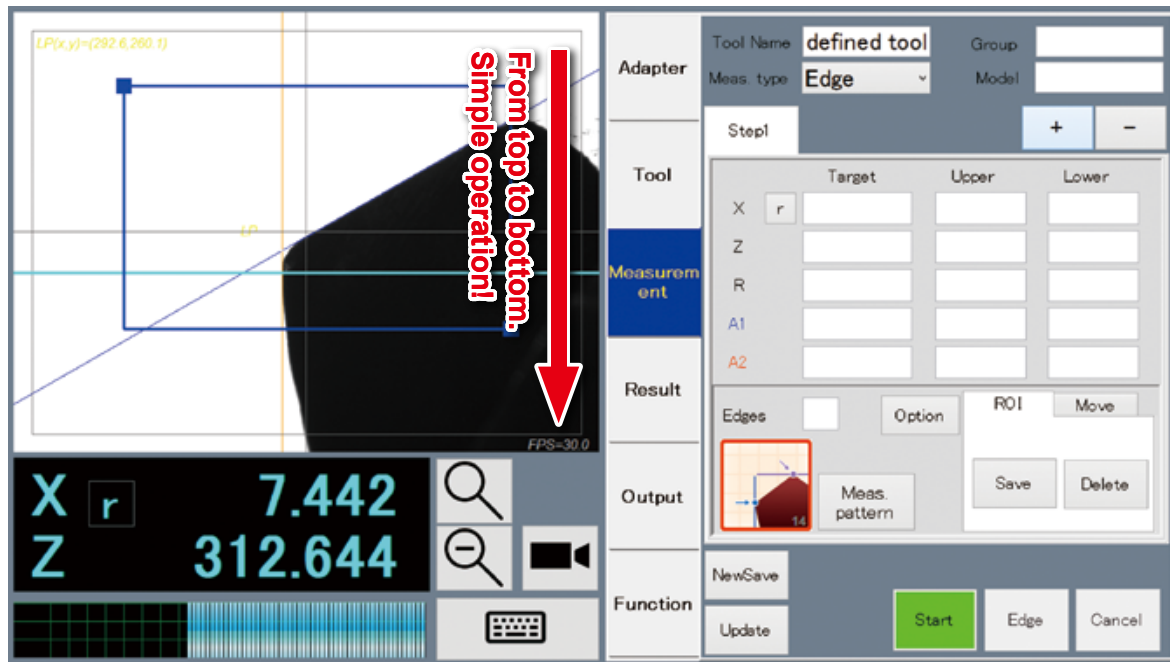
Max Measurement
X-axis : $\phi 300\text{mm}$
Z-axis : 400mm

Collet holder nut can be tightened on the machine. ※MAX60Nm



Product Movie

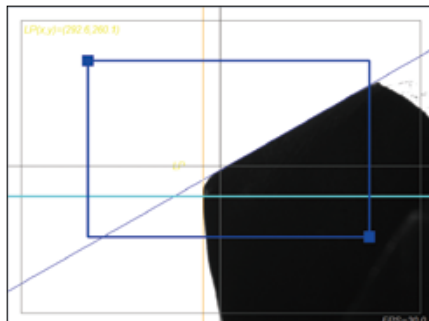
Easy-to-use Software with Tutorial Function



Operation screen lined up in working sequences! Quick operation by switching tabs.
Well-thought-out layout of the operation screen minimizes operation time.

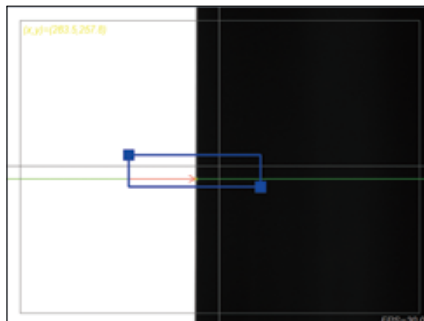
Measurement Functions

① Drill Shoulder Measurement



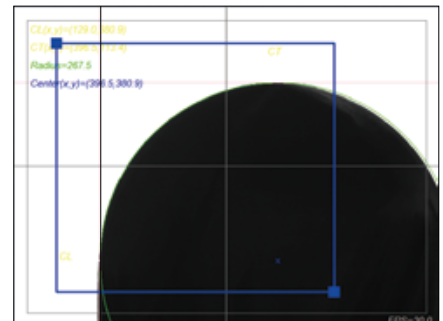
Results that passed or failed to meet the target values can be displayed in a list, or notified with a sound. Results may also be displayed as a graph.

② Runout Measurement of the Cutting Edge



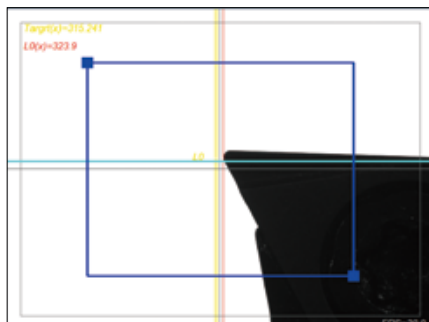
Capture the area you want to measure. Then, turn the spindle.

③ Measuring Afterimage



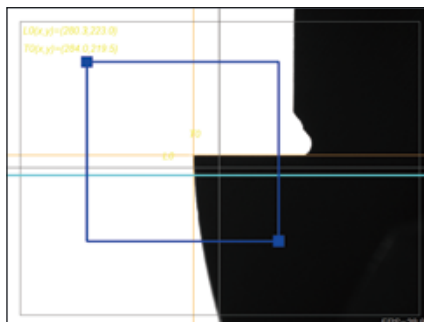
The cutting tool's profile is plotted by rotating the spindle 360 degrees.

④ Tolerance Area Display



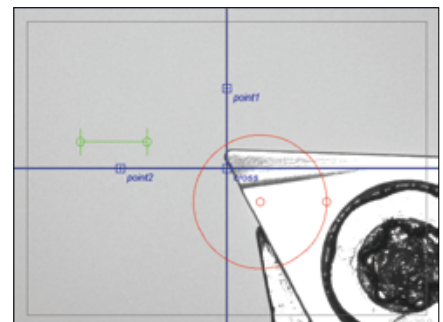
The tolerance area is displayed on the screen for easy adjustment of the boring bar diameter.

⑤ Measuring Step Drill



Each step can be measured separately.

⑥ Real Image of Cutting Edge



Wear and chipping on cutting edge can be inspected.

Options

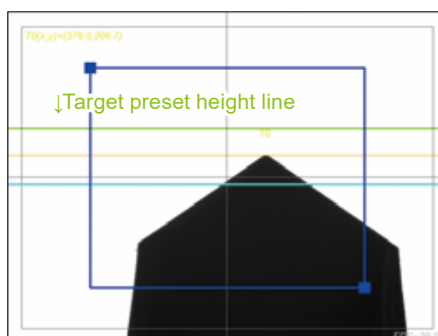
① Stop Measurement When Runout Exceeds Tolerances

| Step1 | | | | | |
|--------|-------|---------|---|----|----|
| Detail | | Graph | | | |
| | X | Z | R | A1 | A2 |
| Upper | | | | | |
| Target | | | | | |
| Lower | | | | | |
| 1 | 5.053 | 246.718 | | | |
| 2 | 5.042 | 246.718 | | | |
| Runout | 0.011 | 0.000 | | | |

↑ Value that exceed runout tolerances will be displayed in red.

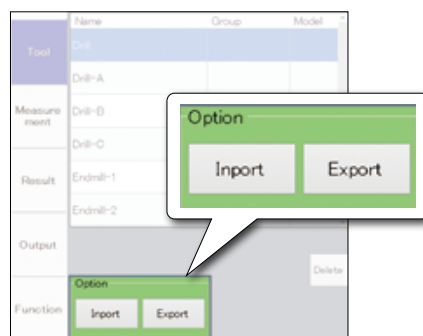
For multi-step measurements, the measurement will stop if runout exceeds the specified tolerances during the runout measurement step. This prevents measurements from running to completion with unacceptable runout.

② Target Value Input



In "Adjustable Mode," the target preset height is displayed on the screen with a green line. Use to offset for cap compression when using collet holders, etc.

③ Import, Export



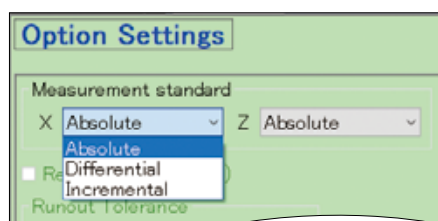
Tool data is imported and exported in the CSV file format. Use to move data to other equipment, or to synchronize tool data between multiple presetters.

④ Switch the X-axis and Z-axis

| | | |
|---|---------|------------------------------------|
| X | 7.181 | XZ Switch OFF (Default Setting) |
| Z | 215.247 | |
| X | 215.247 | XZ Switch ON (Optional Setting) |
| Z | 7.181 | |

Switch the Z-axis so it displays radial measurements instead of vertical, and the X-axis so it shows vertical measurements instead of radial. Use when machining with lathes, etc., in a non-standard direction.

⑤ Setting the measurement standard for step measurement



This function allows you to set the measurement standard for step measurement.

⑥ Base Stand



There are mounting holes for SOTP unit and regulator.

| | |
|-------|-----------------------|
| Code | 4940 00041025 |
| Model | SOTP-BASESTAND |
| Size | W900 x D600 x H760 mm |

Adapters (Sold Separately)



It can be placed on the presetter's adapter tray with the rust-proof case still attached.

- To measure tool holders other than BT50 shank size, adapters are necessary.
- Rust-proof case included to protect the adapter from rust. *Not included for HSK100A and UTS10080 size.

For BT, CAT and SK



BT30, BT40,
CAT40, SK40

*Please designate
the type of retention stud in use.

For HSK



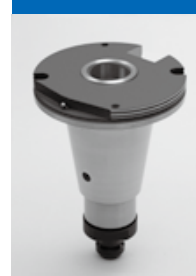
• HSK25E, HSK32E
• HSK32A, HSK40A,
HSK50A, HSK63A,
HSK100A

For UTS



UTS5040, UTS6350,
UTS10080

For C

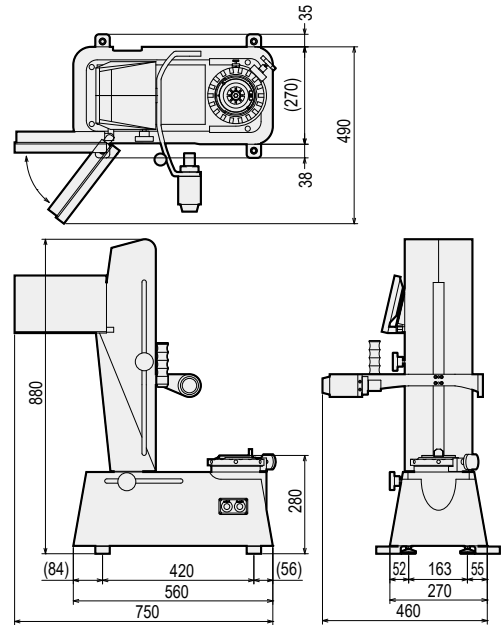


C3, C4

Specifications of SOTP

| | |
|--------------------------------|--|
| External dimensions | 750x490x880(WxDxH) |
| Weight | 75kg |
| Power supply | 100~240V AC, 50/60Hz |
| Power consumption | 52W |
| Air pressure | 0.4~0.6MPa |
| Measurement | X-axis $\phi 300$ mm, Z-axis 400mm ^{*1} |
| Minimum reading | 0.001mm |
| Spindle size | BT50 (Adapters for different spindle sizes available.) |
| Clamp method | Mechanical clamp (2000N) |
| Specifications of camera | 0.33 million pixel CCD monochrome |
| Screen magnification ratio | 11.5× Magnification |
| Display size | 10.1" |
| Cutting edge measurement range | 9.6 x 7.2 mm |
| Menu manipulation method | Touch panel |
| Language selection | English, Japanese, Korean, Chinese, Spanish |
| Accessories | Filter regulator, Cover |
| Spindle Rotation Method | Manual |

- *1 The measurement range of the Z-axis is narrowed by adapter's thickness.
 · Switchable between Inch and Metric display.
 · Specifications and design of the product are subject to change without notice.



| Code | Model | Retention Stud | Accessories | | |
|---------------|---------------------|--------------------------------|---------------|---------------------------|--|
| Code | Model | Note | | | |
| 4910 00040011 | SOTP-400B-1A | PSB-7, PSB-8 PSB-14, PSB-19 | 4944 10000018 | AOTP-PRINT-BRO2 | Label printer (AC100V 50/60Hz 2.0A) ※ Sold Separately. |
| 4910 00040013 | SOTP-400B-1C | PSB-17 | 4944 10000019 | AOTP-PRINT-BRO3 | Label printer (AC100-240V 50/60Hz 1.5A) ※ Sold Separately. |
| 4910 00040024 | SOTP-400B-2D | PSB-24 | 4944 10000020 | AOTP-PRINT-BRO2-LA | Labels for printer ※ Sold Separately. |
| 4910 00040025 | SOTP-400B-2E | PSB-50P | 4944 10000013 | AOTP-DUST-C | Cleaning putty ※ Included with SOTP. |

Presetter Series

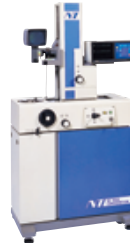
Contactless Optical Tool Presetter



Eagle (AOTP-A type)

- Spindle Rotation : Automatic
- Measurement Range (X-Axis) : 0~ $\phi 400$ mm
- Measurement Range (Z-Axis) : 0~500mm

Contact / Projection Tool Presetters



NTP-400

- Column Movement Method : Lever (Auto)
- Measurement Range (X-Axis) : 0~ $\phi 400$ mm
- Measurement Range (Z-Axis) : 50~500mm



NTP-300A

- Column Movement Method : Handle (Manual)
- Measurement Range (X-Axis) : 0~ $\phi 300$ mm
- Measurement Range (Z-Axis) : 50~500mm

NT TOOL CORPORATION

HEAD OFFICE : www.nttool.com (Web in English available)

NT USA CORPORATION : www.nttoolusa.com

EUROPE OFFICE : www.nttooleurope.com

HEAD OFFICE & FACTORY
IIDA FACTORY
SALES OFFICES in JAPAN (TOKYO / NAGOYA / OSAKA / HIROSHIMA / KYUSHU)

1-7-10, Yoshikawa-cho, Takahama-City, Aichi, 444-1386 Japan
311-1, Osegi, Iida City, Nagano, 395-0157 Japan

Tel. 81-(0)566-54-0101
Tel. 81-(0)265-25-5200

Fax. 81-(0)566-54-0111
Fax. 81-(0)265-25-5225

E-mail. osb@nttool.co.jp
E-mail. tidaplant@nttool.co.jp

NT USA CORPORATION
NT TOOL DE MEXICO S.A. DE C.V.
NT TOOL EUROPE GmbH
NT TOOL (SHANGHAI) CO., LTD.
NT TOOL THAI CO., LTD.
NT TOOL (THAILAND) CO., LTD.
PT. NT INDONESIA

318 Seaboard Lane Suite 301 Franklin TN, 37067 U.S.A.
Blvd. Aeropuerto No.648, Local 5, Col. San Jose el Alto, Leon, Guanajuato, Mexico C.P. 37545
Siemensstrasse 17A, 61449 Steinbach / Ts., Germany
Room 2301A, 2304, No.167 Jiangning Rd., Jing'an District, Shanghai, China, 200041
26/24 MOO 3 LAMLUKKA ROAD, LAT SAWAI, LAMLUKKA, PATHUMTHANI 12150
222 Moo 1, Hi-tech Industrial Estate, Banpho, Bang pa-in, Ayuthaya 13160, Thailand
Kawasan Industri Jababeka Tahap 6, Blok B 2A, Desa Jatreja, Kecamatan Cikarang Timur, Kabupaten Bekasi, 17530, Indonesia

Tel. 1-615-771-1899
Tel. 52-477-194-4587
Tel. 49-(0)6171-91639-0
Tel. 86-(0)21-6361-9540
Tel. 66-(0)2117-9323
Tel. 66-(0)3531-4180
Tel. 62-(0)212-851-8066

Fax. 1-615-771-0121
Fax. 49-(0)6171-91639-90
Fax. 86-(0)21-6360-7845
Fax. 66-(0)2117-9324
Fax. 66-(0)3531-4182
Fax. 62-(0)212-851-8067

E-mail. sales@nttoolusa.com
E-mail. sales@nttool.com.mx
E-mail. info@nttooleurope.com
E-mail. nt-shanghai2@nttool.co.jp
E-mail. sales@nttoolthai.co.th
E-mail. nt_thai@ksc.th.com
E-mail. nt-indonesia@nttool.co.jp



TECHNO MAIL

technomail@nttool.co.jp

For technical question,
please contact us by technomail.

WORLDWIDE NETWORK

