



# Falcon

SOTP type

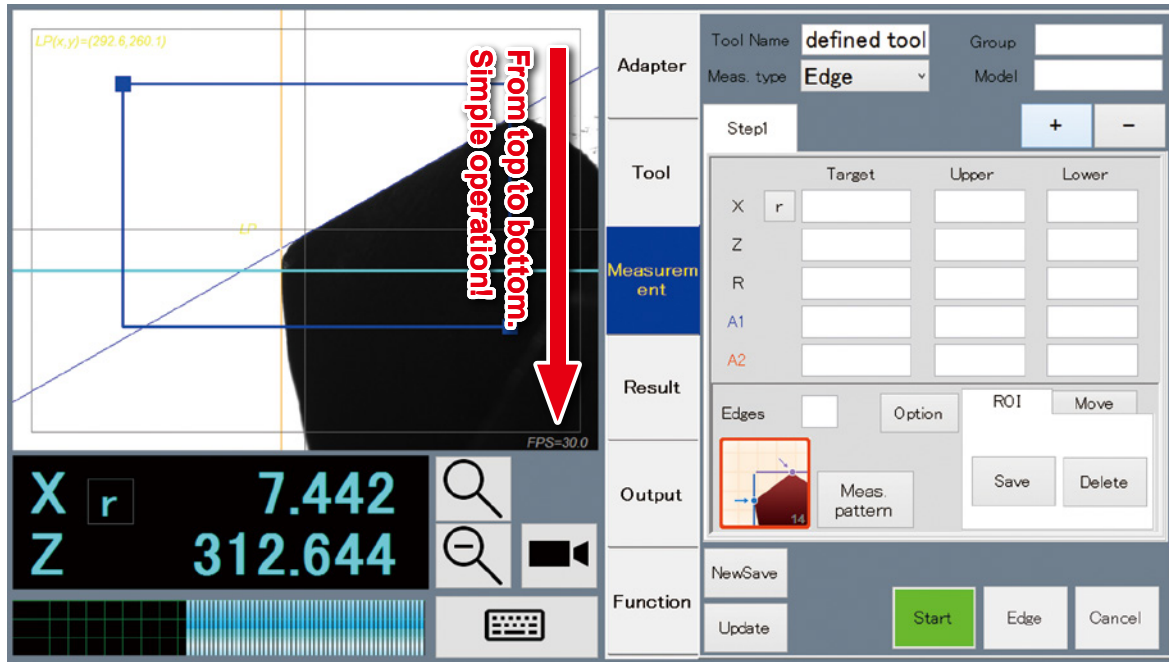
Contactless Optical Tool Presetter **Aegis-i** Series

**Simple and Compact!**  
**High-performance presetter - affordable price!**

*Collet holder nut can be tightened on the machine.*



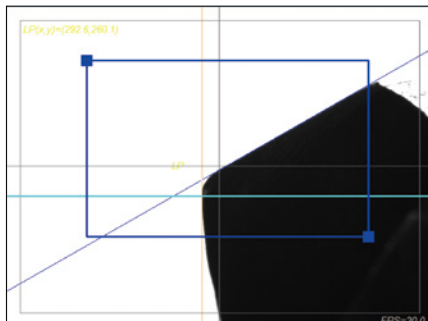
## Easy-to-use Software with Tutorial Function



Operation screen lined up in working sequences! Quick operation by switching tabs.  
Well-thought-out layout of the operation screen minimizes operation time.

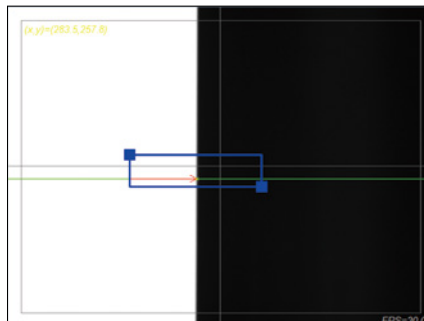
## Measurement Functions

### ① Drill Shoulder Measurement



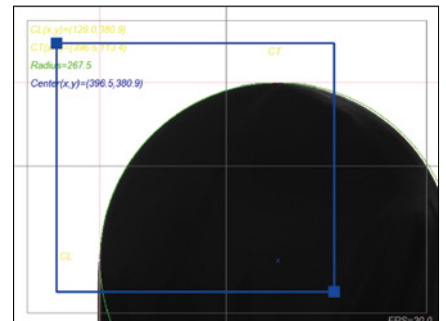
Results that passed or failed to meet the target values can be displayed in a list, or notified with a sound. Results may also be displayed as a graph.

### ② Runout Measurement of the Cutting Edge



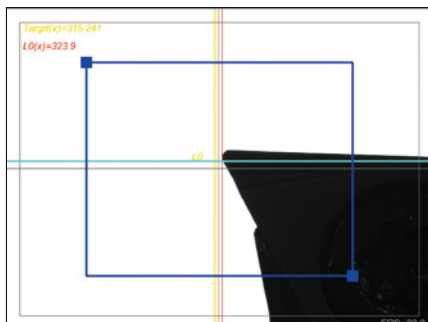
Capture the area you want to measure. Then, turn the spindle.

### ③ Measuring Afterimage



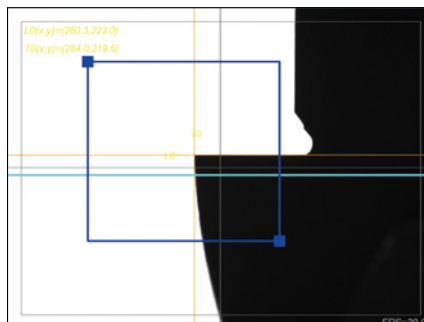
The cutting tool's profile is plotted by rotating the spindle 360 degrees.

### ④ Tolerance Area Display



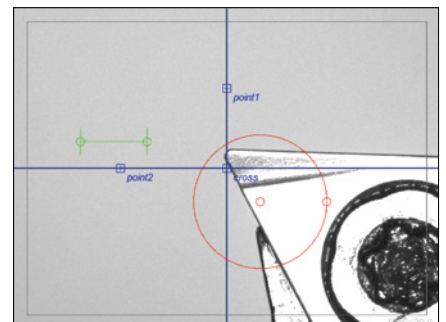
The tolerance area is displayed on the screen for easy adjustment of the boring bar diameter.

### ⑤ Measuring Step Drill



Each step can be measured separately.

### ⑥ Real Image of Cutting Edge



Wear and chipping on cutting edge can be inspected.

## Options

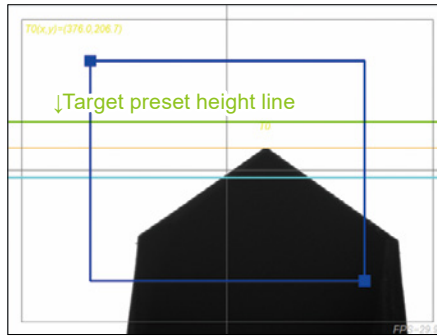
### ① Stop Measurement When Runout Exceeds Tolerances

Step1					
Detail	Graph				
	X	Z	R	A1	A2
Upper Target					
Lower					
1	5.053	246.718			
2	5.042	246.718			
Runout	0.011	0.000			

↑ Value that exceed runout tolerances will be displayed in red.

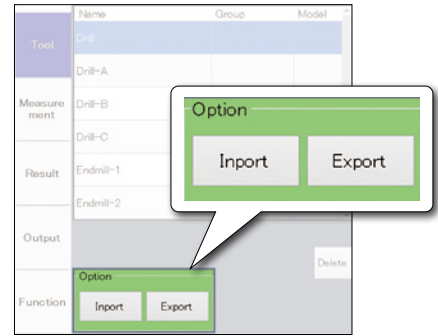
For multi-step measurements, the measurement will stop if runout exceeds the specified tolerances during the runout measurement step. This prevents measurements from running to completion with unacceptable runout.

### ② Target Value Input



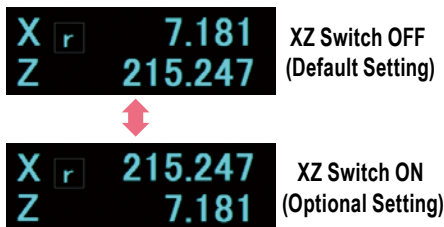
In "Adjustable Mode," the target preset height is displayed on the screen with a green line. Use to offset for cap compression when using collet holders, etc.

### ③ Import, Export



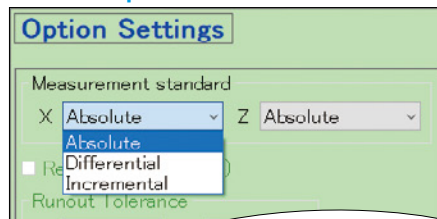
Tool data is imported and exported in the CSV file format. Use to move data to other equipment, or to synchronize tool data between multiple presetters.

### ④ Switch the X-axis and Z-axis



Switch the Z-axis so it displays radial measurements instead of vertical, and the X-axis so it shows vertical measurements instead of radial. Use when machining with lathes, etc., in a non-standard direction.

### ⑤ Setting the measurement standard for step measurement



This function allows you to set the measurement standard for step measurement.

### ⑥ Base Stand



There are mounting holes for SOTP unit and regulator.

Code	4940 00041025
Model	SOTP-BASESTAND
Size	W900 x D600 x H760 mm

### ⑦ Lens Guard



**NEW** Protects the lens from accidental impact.

### ⑧ Adaptor Rack(BT50)



**NEW** Frequently used adapters and holders can be placed nearby.

## Adapters (Sold Separately)

**NEW** Rust-proof case



It can be placed on the presetter's adapter tray with the rust-proof case still attached.

- To measure tool holders other than BT50 shank size, adapters are necessary.
- Rust-proof case included to protect the adapter from rust. \*Not included for HSK100A and UTS10080 size.

For BT, CAT and SK



BT30, BT40, CAT40, SK40

\*Please designate the type of retention stud in use.

For HSK



• HSK25E, HSK32E  
• HSK32A, HSK40A, HSK50A, HSK63A, HSK100A

For UTS



UTS5040, UTS6350, UTS10080

For C

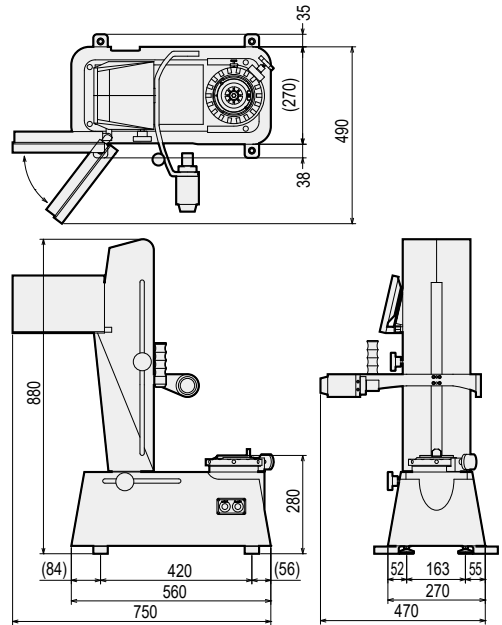


C3, C4  
**NEW** : C5, C6  
Coolant hose compatible

## Specifications of SOTP

External dimensions	750x490x880(WxDxH)
Weight	75kg
Power supply	100~240V AC, 50/60Hz
Power consumption	52W
Air pressure	0.4~0.6MPa
Measurement	X-axis $\phi$ 300mm, Z-axis 400mm <sup>*1</sup>
Minimum reading	0.001mm
Spindle size	BT50 (Adapters for different spindle sizes available.)
Clamp method	Mechanical clamp (2000N)
Specifications of camera	0.33 million pixel CCD monochrome
Screen magnification ratio	11.5× Magnification
Display size	10.1"
Cutting edge measurement range	9.6 x 7.2 mm
Menu manipulation method	Touch panel
Language selection	English, Japanese, Korean, Chinese, Spanish
Accessories	Filter regulator, Cover
Spindle Rotation Method	Manual

- \*1 The measurement range of the Z-axis is narrowed by adapter's thickness.  
 · Switchable between Inch and Metric display.  
 · Specifications and design of the product are subject to change without notice.



Code	Model	Retention Stud	Accessories		
Code	Model	Note			
4910 00040011	<b>SOTP-400B-1A</b>	PSB-7, PSB-8 PSB-14, PSB-19	4944 10000018	<b>AOTP-PRINT-BRO2</b>	Label printer (AC100V 50/60Hz 2.0A) ※ Sold Separately.
4910 00040013	<b>SOTP-400B-1C</b>	PSB-17	4944 10000019	<b>AOTP-PRINT-BRO3</b>	Label printer (AC100-240V 50/60Hz 1.5A) ※ Sold Separately.
4910 00040024	<b>SOTP-400B-2D</b>	PSB-24	4944 10000020	<b>AOTP-PRINT-BRO2-LA</b>	Labels for printer ※ Sold Separately.
4910 00040025	<b>SOTP-400B-2E</b>	PSB-50P	4944 10000013	<b>AOTP-DUST-C</b>	Cleaning putty ※ Included with SOTP.

## Presetter Series

### Contactless Optical Tool Presetter



#### Eagle (AOTP-A type)

- Spindle Rotation : Automatic
- Measurement Range (X-Axis) : 0~ $\phi$ 400mm
- Measurement Range (Z-Axis) : 0~500mm

### Contact / Projection Tool Presetters



#### NTP-400

- Column Movement Method : Lever (Auto)
- Measurement Range (X-Axis) : 0~ $\phi$ 400mm
- Measurement Range (Z-Axis) : 50~500mm



#### NTP-300A

- Column Movement Method : Handle (Manual)
- Measurement Range (X-Axis) : 0~ $\phi$ 300mm
- Measurement Range (Z-Axis) : 50~500mm

## NT TOOL CORPORATION

HEAD OFFICE : [www.nttool.com](http://www.nttool.com) (Web in English available)

NT USA CORPORATION : [www.nttoolusa.com](http://www.nttoolusa.com)

EUROPE OFFICE : [www.nttooleurope.com](http://www.nttooleurope.com)

HEAD OFFICE & FACTORY  
IIDA FACTORY  
SALES OFFICES in JAPAN (TOKYO / NAGOYA / OSAKA / HIROSHIMA / KYUSHU)

1-7-10, Yoshikawa-cho, Takahama-City, Aichi, 444-1386 Japan  
311-1, Osegi, Iida City, Nagano, 395-0157 Japan

Tel. 81-(0)566-54-0101 Fax. 81-(0)566-54-0111 E-mail. osb@nttool.co.jp  
Tel. 81-(0)265-25-5200 Fax. 81-(0)265-25-5225 E-mail. idaplant@nttool.co.jp

NT USA CORPORATION  
NT TOOL DE MEXICO S.A. DE C.V.  
NT TOOL EUROPE GmbH  
NT TOOL (SHANGHAI) CO., LTD.  
NT TOOL THAI CO., LTD.  
NT TOOL (THAILAND) CO., LTD.  
PT. NT INDONESIA

318 Seaboard Lane Suite 301 Franklin TN, 37067 U.S.A.  
Blvd. Aeropuerto No.648, Local 5, Col. San Jose el Alto, Leon, Guanajuato, Mexico C.P. 37545  
Siemensstrasse 17A, 61449 Steinbach / Ts., Germany  
Room 2301A, 2304, No.167 Jiangning Rd., Jing'an District, Shanghai, China, 200041  
26/24 MOO 3 LAMLUKKA ROAD, LAT SAWAI, LAMLUKKA, PATHUMTHANI 12150  
222 Moo 1, Hi-tech Industrial Estate, Banpho, Bang pa-in, Ayuthaya 13160, Thailand  
Kawasan Industri Jababeka Tahap 6, Blok B 2A, Desa Jatreja, Kecamatan Cikarang Timur, Kabupaten Bekasi, 17530, Indonesia

Tel. 1-615-771-1899 Fax. 1-615-771-0121 E-mail. sales@nttoolusa.com  
Tel. 52-477-194-4587 E-mail. sales@nttool.com.mx  
Tel. 49-(0)6171-91639-0 Fax. 49-(0)6171-91639-90 E-mail. info@nttooleurope.com  
Tel. 86-(0)21-6361-9540 Fax. 86-(0)21-6360-7845 E-mail. nt-shanghai2@nttool.co.jp  
Tel. 66-(0)2117-9323 Fax. 66-(0)2117-9324 E-mail. sales@nttoolthai.co.th  
Tel. 66-(0)3531-4180 Fax. 66-(0)3531-4182 E-mail. nt\_thai@ksc.th.com  
Tel. 62-(0)212-851-8066 Fax. 62-(0)212-851-8067 E-mail. nt-indonesia@nttool.co.jp



TECHNO MAIL

[technomail@nttool.co.jp](mailto:technomail@nttool.co.jp)

For technical question,  
please contact us by technomail.

## WORLDWIDE NETWORK

